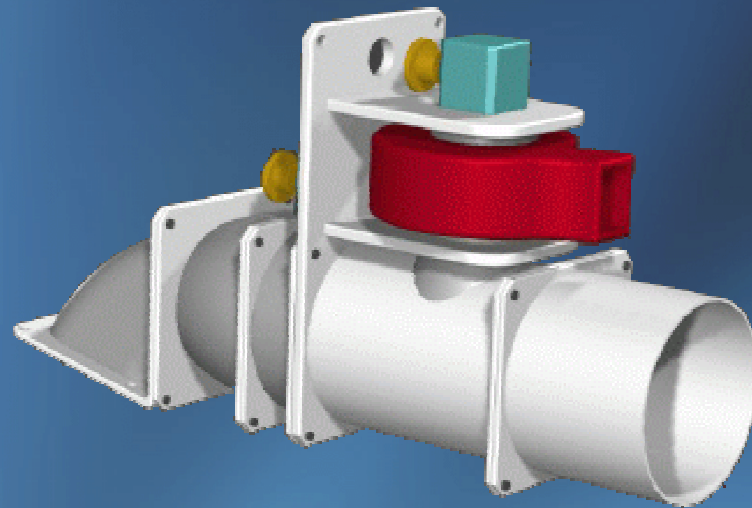


Phoenix Vortex Drive™

Marine In-water Transmission



Hydrostatic Marine CVT *

* Constantly Variable Transmission

The Phoenix Vortex Drive™ is a revolutionary concept in marine propulsion systems.

Delivering the best power, acceleration, speed, maneuvering & fuel economy in any class, it is the first TRUE jet drive!



All Speed Control

Our unique design delivers optimum water flow & directional control at all speeds using:

- Low-cost Tesla pumps
- Proprietary nozzle shaping technology
- Improved jet stream vectoring



Overcoming the Upper Limit Barrier

The unique two-stage design of the Phoenix Vortex Drive™ overcomes the upper limit barrier of conventional water jet drives while maintaining excellent low-end acceleration.



Intelligent Propulsion System

Computer control over pump loading & fluid flow make the Phoenix Vortex Drive™ the most efficient marine propulsion system of this century.



Key Benefits

- No exposed prop - safer, more reliable
- Higher efficiency than jet drives or exposed props (saves fuel)
- Higher maneuverability at all speeds
- Higher performance (ultra-high speed)
- Can pass sand/gravel - no damage to system



Technology Breakthroughs

- High performance dynamic nozzles
- Truejet™ impeller - 2-stage centrifugal design for highest efficiency
- Outlet nozzle tunes water jet characteristics to vehicle speed/acceleration demands



Push past the 90-knot limit

- Designed for speeds in the 3-digit arena.
- Best efficiencies are achieved in advanced tunnel hull design - can also be used with conventional hulls



Phoenix Vortex Drive™

Cleaner, safer, faster

This concept design is ready to propel your boat
into the Space Age!

To discuss manufacturing opportunities contact:

Ken Rieli, CEO
WorldKar Corporation
Munising, Michigan USA
krieli@WorldKar.com

